

A

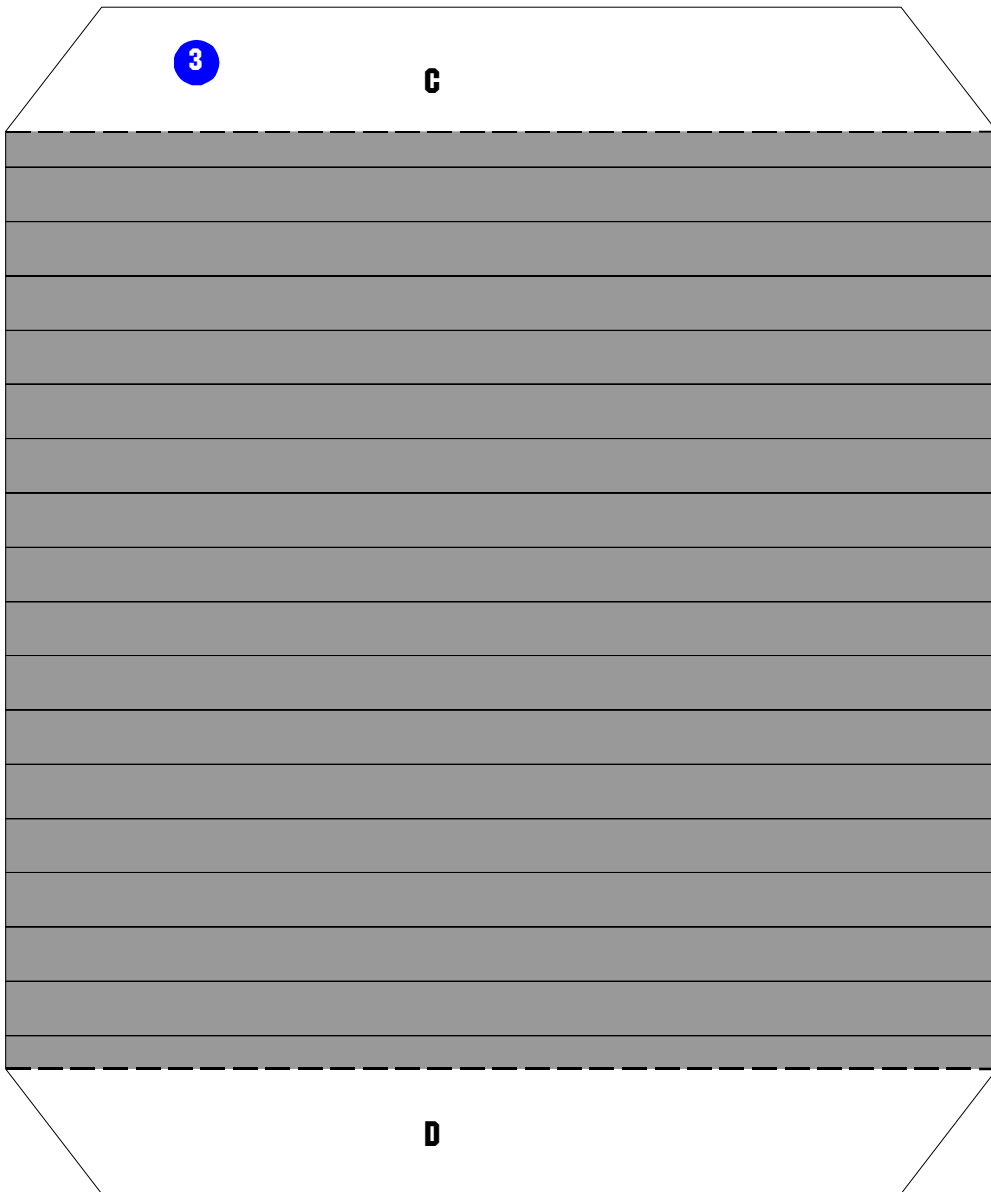
1

**UNCLE
SAM
NEEDS
YOU**

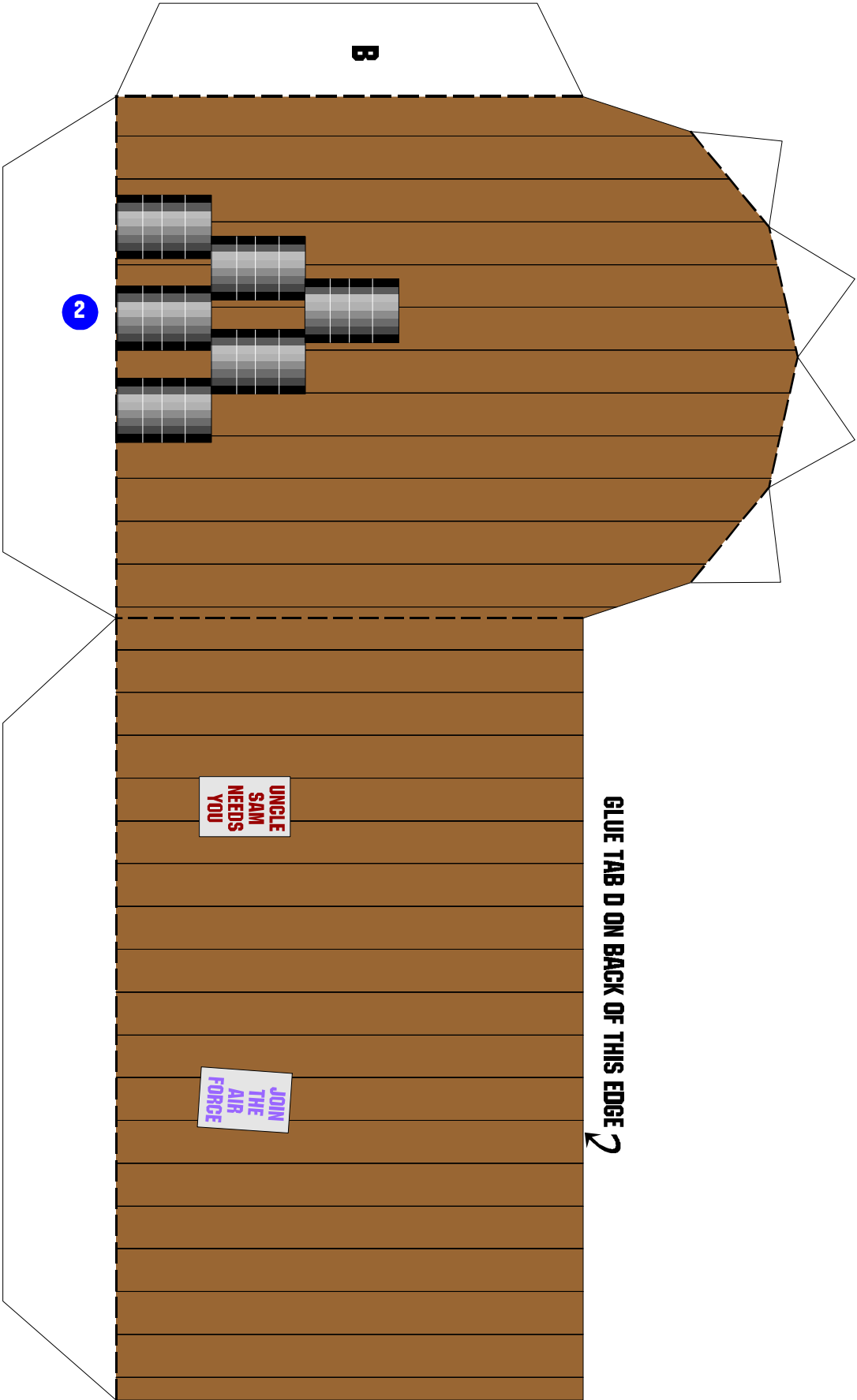
**JOIN
THE
AIR
FORCE**

GLUE TAB C ON BACK OF THIS EDGE

GLUE TAB B ON BACK OF THIS EDGE



ROOF



B

2

**UNCLE
SAM
NEEDS
YOU**

**JOIN
THE
AIR
FORCE**

GLUE TAB D ON BACK OF THIS EDGE ↷

GLUE TAB A ON BACK OF THIS EDGE ↶

HANGER ASSEMBLY INSTRUCTIONS

Start out by cutting the parts around the outside black line. The part numbers are marked on each part inside a blue circle.

- A. Score all of the dashed lines.
- B. Glue tab B of part #2 under the end of part #1.
- C. Fold the four sides in and glue tab A under the other side.
- D. Fold the tabs on the bottom of the sides and the top of the curved ends down flat.
- E. Put a little glue on the triangular shaped tabs of the sides and the long white tabs of the top. Curl the top and glue into position.

